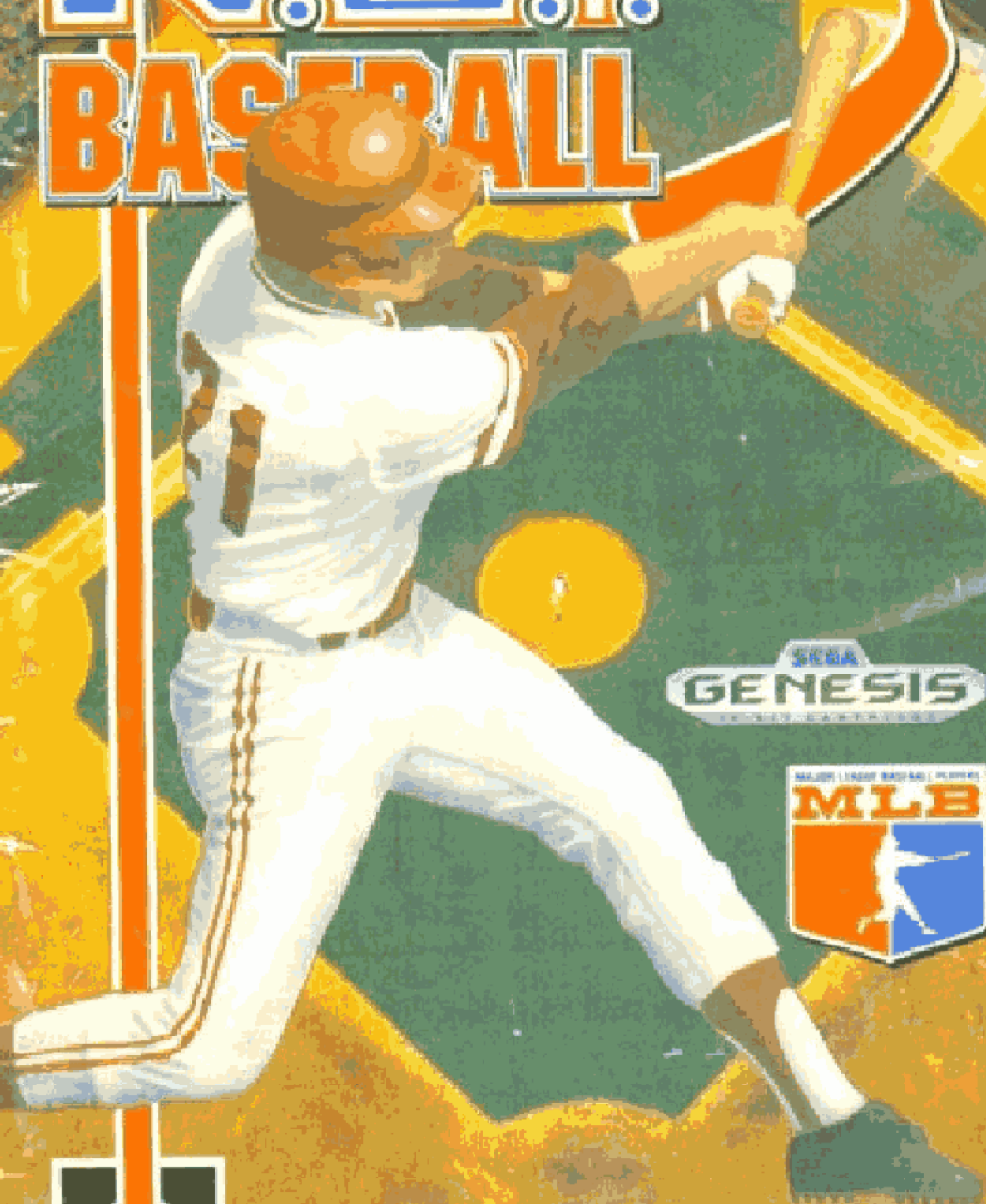


RBI™ BASEBALL 3



SEGA
GENESIS
POWER UP YOUR PLAY



TENGEN

TABLE OF CONTENTS

1. INTRODUCTION	1
2. HOW TO START PLAY	2
Press Start	2
Options	3
3. OFFENSE CONTROLS	4
At Bat	4
Base Running Control	4
Batter Time-Out Options	5
4. DEFENSE CONTROLS	6
Pitching	6
Fielding the Ball	7
Pitcher Time-Out Options	8
5. WATCH MODE	8
6. SERIES PLAY	9
7. TIPS	10
Pitching	10
Fielding	10
OFFICIAL 1990 ROSTERS & STATS	11
'83-'89 DIVISION CHAMPS: ROSTERS & STATS	21

CONGRATULATIONS!

You have just purchased R.B.I. BASEBALL 3, a premium quality TENGEn game for play on your Sega Genesis! The incredible excitement of pro baseball is now at your fingertips, ready to provide countless hours of intense, detailed action at home!

*Enough talk — it's time to **play ball!***

I. INTRODUCTION

R.B.I. BASEBALL 3 simulates real baseball. Most of the rules and strategies of the actual game apply. Like a real game, you must bat, pitch, field, run and substitute players well to win. Each player has his own strengths and weaknesses based on his real-life numbers. For batters, the stats include his position, hitting ability, power, running speed and whether he is right- or left-handed. For pitchers, the stats include his control and pitching speed.

All the players in R.B.I. Baseball 3 were developed from two sets of actual pro stats: the 1990 teams and the Division Champions from 1983 through 1989. For example, a player who stole numerous bases and had a high batting average in real life will have a high speed in the game. A player with numerous home runs in real life will have a good power rating in the game.

Beat all the other teams and you'll earn the chance to challenge a "secret" super team!

2. HOW TO START PLAY:

Press START :

1P: Play against the computer.

2P: Competitive play.

Watch: Computer vs. Computer (as if on TV).

To Select Your Teams and Year:

Move the cursor with the control pad. Press A to select the team and year chosen. Select your computer team this way as well. Not all years are available since years before 1990 are for Division Champions only.

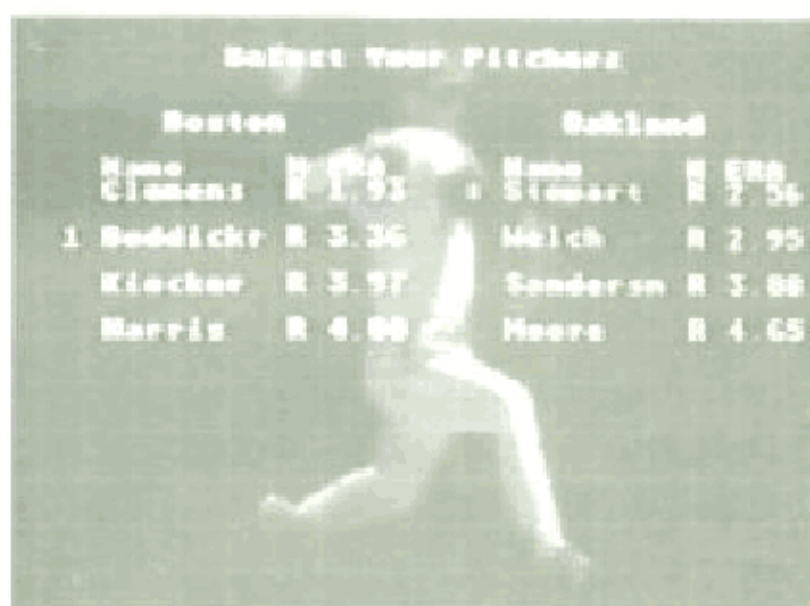
To Select Your Starting Pitcher:

Move the cursor up and down with the control pad. Press A to select.

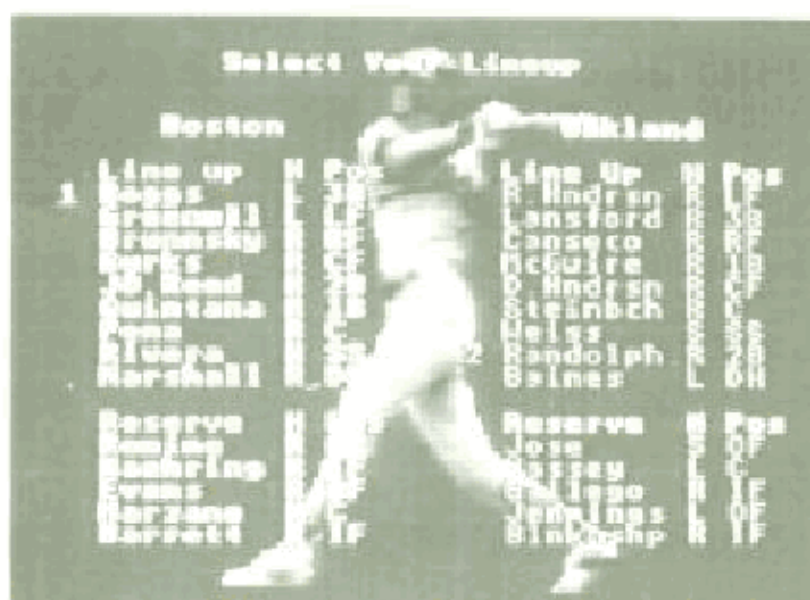
Note: You may use up to 5 pitchers per game: 1 starter and 4 relievers or 2



Select teams and year.



Select starting pitcher.



Select starting lineup.

starters and 3 relievers. The first 4 pitchers on your roster are the starters. A starting pitcher may only appear in every other game of a series.

To select your starting line up: Move the cursor with the control pad.

Press **B** to change players.

Press **A** to accept the current lineup.

Press **C** to view different statistics.

Options:

To change the current option setting, press **START** or **A**.

To cycle among options, press **UP** or **DOWN**.

Music:

On: Background music plays during the game.

Off: No background music plays.

Note: The sound effects are always present.

Difficulty:

Hard/Medium/Easy (how well the computer plays).

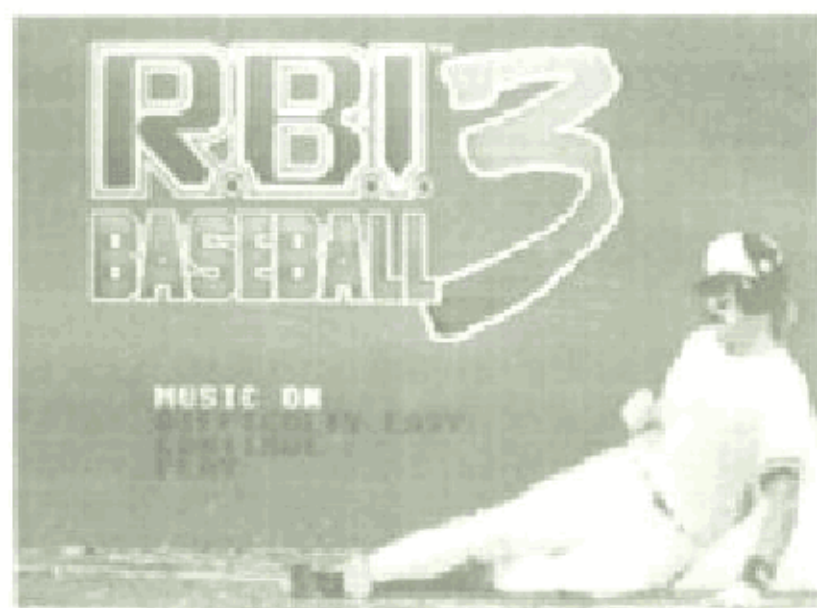
Note: A player may forfeit at any time. To forfeit, go to the scoreboard and hold down **B** and **C**, then press **A**.

Continue:

To enter a password.

Play:

Return to the main menu.



Options Screen.

3. OFFENSE CONTROLS

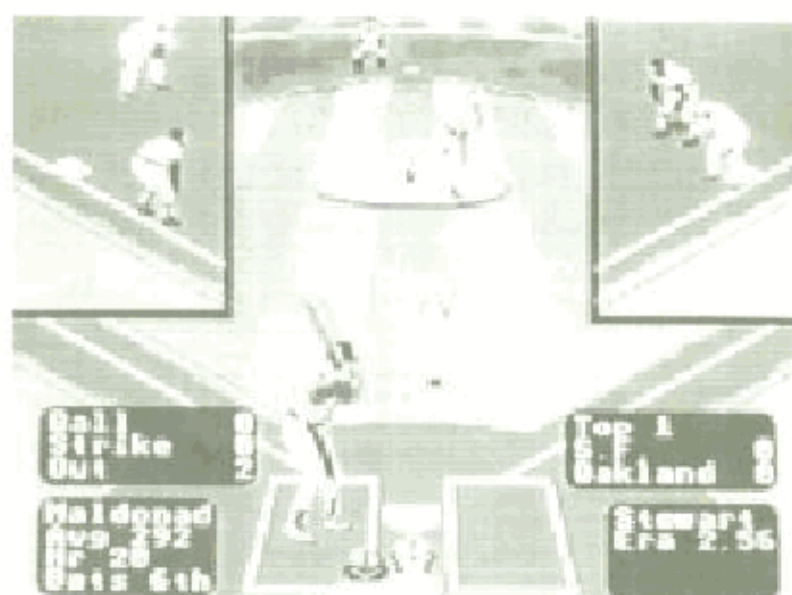
At Bat:

Control Pad:

Move the batter's position in batter's box.

A Button: Batter swings bat. Press and hold for a complete swing.

C Button: Use this button to bunt. Press once and the batter prepares to bunt. If the pitch is a ball, press again and the bat will return to the ready position. If you press too late, a strike will be called.



Base Running Control:

Control Pad:



B Button: Base runner advances to the next base. Choose the base you want the runner to run to with control pad and press **B**. Use **B** to steal bases, for hit and run plays, squeeze plays and to advance extra bases during a play.

C Button: Base runner returns to the previous base. Choose the base you want the runner to run to with the control pad and press **C**.

Note: The base runners run as soon as the ball is hit. When a fly ball is hit, it is up to the player to make all of the base runners go back to avoid a double or triple play. After tagging up you may advance to the next base.

Batter Time-Out Options:

(Press **START** to call time-out, and again to cancel)

Substitutions (SUB): Change a batter or base runner.

Move the cursor to the player you wish to remove from the lineup.

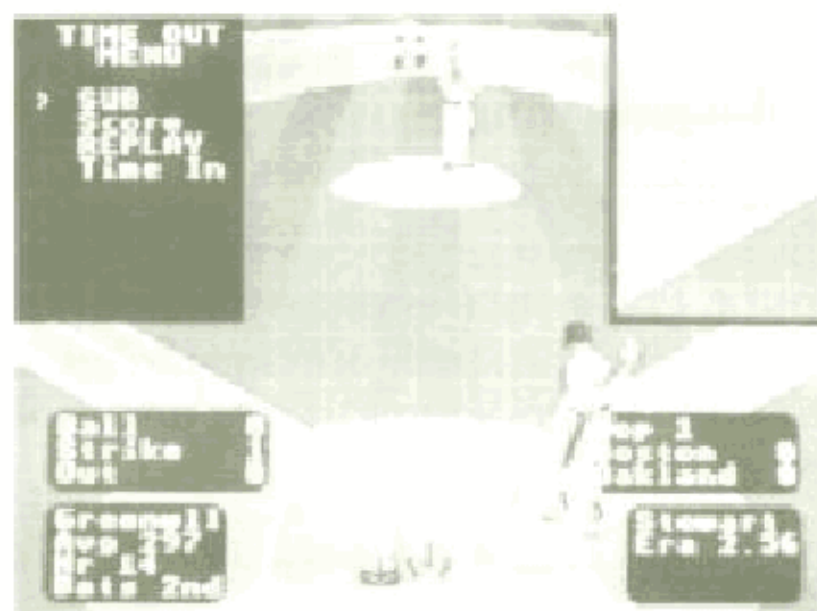
His name appears at the top of the screen under the word "Replace." Now move the cursor to the player you wish to insert from the bench. His name appears to the right of the person he is replacing. Press **A** to substitute or **START** to not substitute.

Switch Hit (Sw. Hit): Switch to left or right handed batting. Only batters who are switch hitters may do this.

Scoreboard (Score): While viewing the scoreboard, hold down **B** and **C**, then press **A** to forfeit.

Time-in: Return to play.

Instant Replay (Replay): See the last fielding play again.

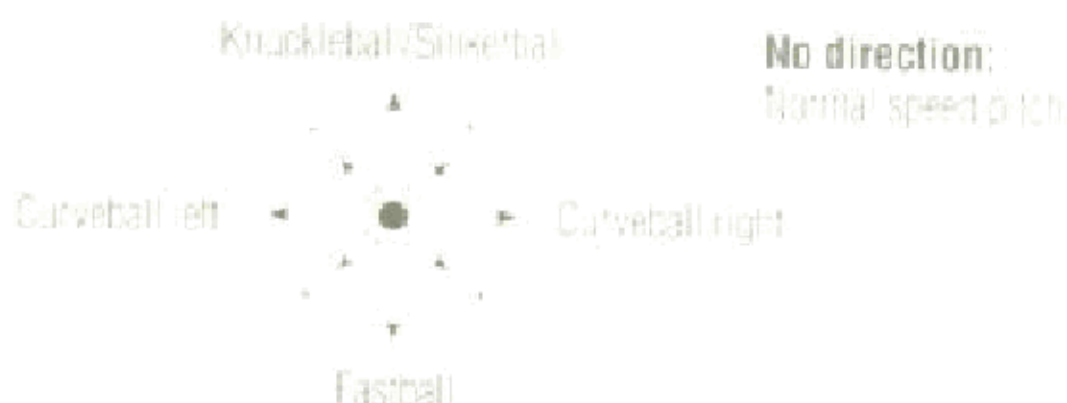


Batter Time-Out Screen.

4. DEFENSE CONTROLS

Pitching:

Control pad:

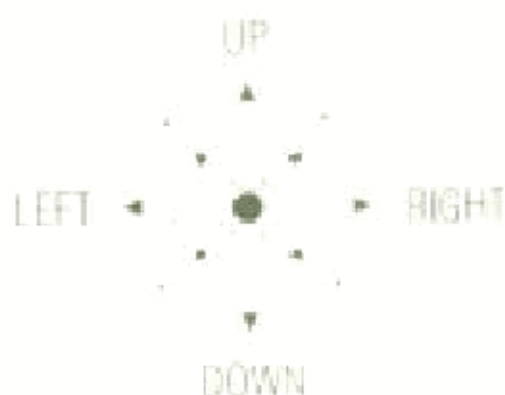


A Button: Pitches the ball — Press *A* to throw the pitch. On the control pad, press and hold up, down, or neither before you press *A* to decide the speed of the ball. Once the windup starts the speed cannot be changed. After the ball is pitched, you can control the ball by moving the control pad left and right.

B Button: Attempt to pick off a base runner. You may choose which base the pitcher throws to by using the control pad and pressing *B*, then pressing *A* to throw to a base.

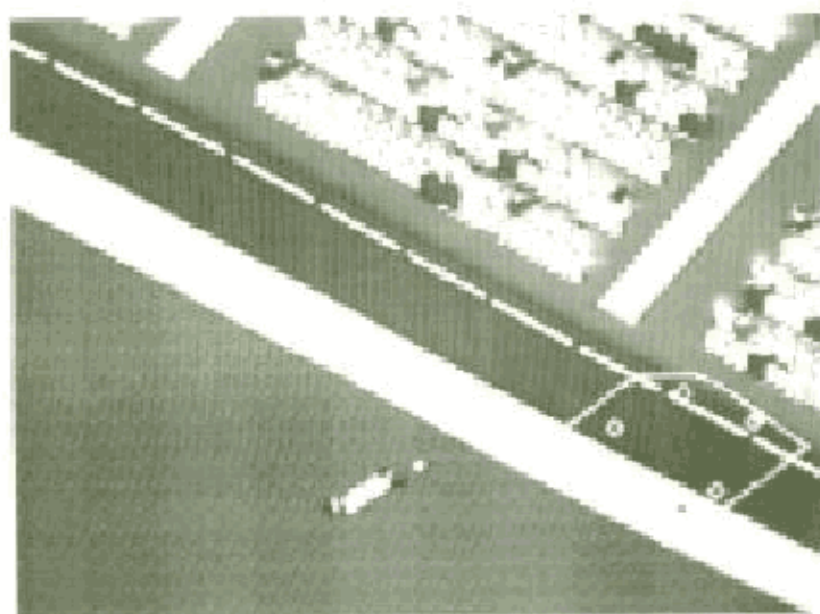
Fielding the Ball:

Control Pad: Moves your fielders —



Note: The pitcher can move side to side on the mound before the pitch is thrown by using the control pad.

A Button: Press to throw the ball. The ball will be thrown to the base you select with the control pad. When no base is selected, the ball will be thrown to first base.



B Button: Press to run to a base. The fielder will run to the base you select with the control pad. When no base is selected, the fielder will run to first base.

To Dive and Jump: When the ball is hit, press **B** and a direction to dive. Press **C** to jump.

Errors: Occasionally a fielder will "bobble" the ball, or make a poor throw. Avoid throwing the ball to a base when a fielder has left the position. The chance for errors is based on the team you are using.

Pitcher Time-Out Options:

(Press START to call time out)

New Pitcher (Relief): Move the cursor to the desired relief pitcher. Press *A* to do the substitution.

New Fielder (SUB): Move the cursor to the player that you wish to remove from the line up. His name appears at the top of the screen, below the word "Replace." Now move the cursor to the player you wish to insert from the bench. His name appears to the right of the person he is replacing. Press *A* to substitute, *START* to not substitute.

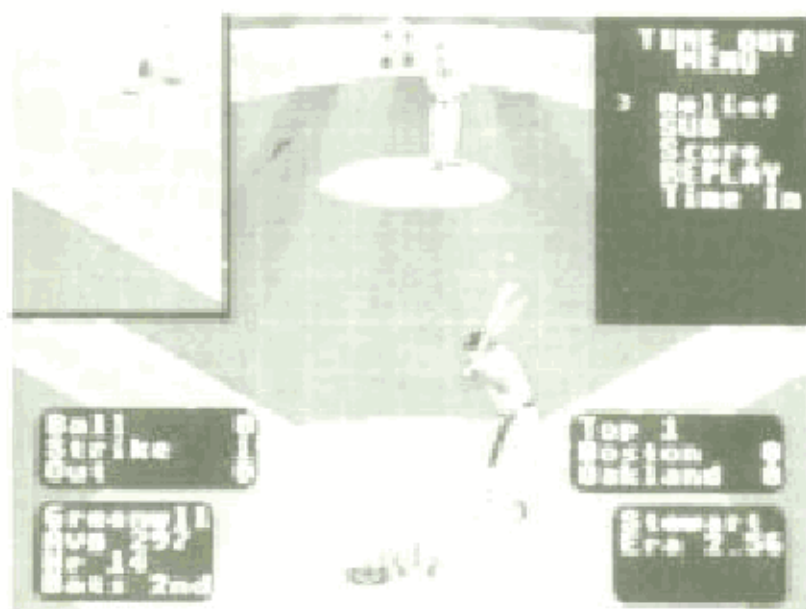
Scoreboard: Press *A* to see the scoreboard.

Time-In: Return to play.

Instant Replay (Replay): See an instant replay of the last play that happened. Some plays cannot be viewed by instant replay.

5. WATCH MODE:

Watch mode can also be used as a training mode or a manager mode. In this mode, the computer will control the game, but you may participate by using the controller. To manage, let the computer play the game while you substitute players and tell runners to steal bases. To train, let the computer do the difficult fielding while you do the easier fielding.



Pitcher Time-Out Screen.

6. SERIES PLAY:

In a series, remember that a starting pitcher may only appear as often as every other game. If you use all the best starting pitchers in your first game, they will not be available in the second.

In two-player mode, you play a seven-game series.

In single-player mode, if you select two different teams in the same league, you will play a series against all the teams in that league. Otherwise, you will play a seven-game series.

The four "Leagues" are:

- 1990 National
- 1990 American
- National Division winners
- American Division winners

To play the next game in the series, press **A** or **START** on the Newspaper Screen with controller 1. Make sure to write down your password (shown in the bottom left corner of the screen) if you want to continue the series later.

7. TIPS:

Pitching:

The starting pitchers have more stamina than the relievers. Always be aware of your pitcher's ability because he gets tired. Keep an eye on the MPH and how much you can move the pitches sideways. The fastball and sinkerball will use more stamina than normal pitches. When pitching to the computer, especially when a power hitter is batting, try not to throw it over the middle of the plate. Using the sinkerball when you have two strikes on the hitter is often a good tactic.

Fielding:

You should begin to move your fielders as soon as the ball is hit. Get familiar with the starting points of all your fielders so you can react quickly instead of waiting until you see the fielders. When a pop fly is hit, watch the radar – you need to predict where the ball is going to land and move the closest player to that destination. Adjustments should be made based on the shadow of the ball and the tone that indicates the height of the ball.

Batting: Do not stand still in the batter's box. Try to fool the pitcher as to where you will be when the ball is thrown.

General: If you replace a fielder with a player that is not from the same position, there will be more errors.

Never talk to your opponent about the last pitch. If he knows what you think about it, that may help him on the next pitch.

When you throw or run with the ball, choose the desired direction with the control pad, then press *A* or *B*. Do not select a direction, let go, then press *A* or *B*. You must hold the control pad arrow until after the button is pressed.

Hint: For a quick throw, press a direction and *A* at the same time.

OFFICIAL 1990 PLAYER ROSTERS & STATS

REAL Baseball 3 uses real players and their actual 1990 stats. Now, you get to make all the decisions a real manager makes! These stats will help you decide which players to put on the field to get a winning combination. You saw how the pros did in real life. Now see what they can do when you manage them!

ABBREVIATION KEYS

BATTERS

HAND - RIGHT, LEFT, OR SWITCH-HITTER

AVG - BATTING AVERAGE

HR - HOME RUNS

SPD - SPEED (HIGHER THE BETTER)

POS - POSITION: OUTFIELD, INFIELD, OR CATCHER

PITCHERS

HAND - LEFT OR RIGHT SIDED ARM

ERA - EARNED RUN AVERAGE

(BA) BALTIMORE

BATTERS

PLAYER	HAND	AVG	HR	SPD	POS
FINLEY	L	256	3	13	O
OPSULAK	L	269	11	8	O
MILLIGAN	R	265	20	7	I
C. RIPKEN	R	250	21	7	I
DEVEREAX	R	240	12	9	O
B. RIPKEN	R	291	3	7	I
TETTLEIN	S	223	15	6	C
WRIGHTIN	R	226	8	6	I
HORN	L	248	14	5	O
HULETT	R	266	3	5	I
SEGU	S	244	2	5	I
MELVIN	R	243	5	5	C
ANDERSON	L	231	3	11	O
RITTLE	R	231	18	5	O

PITCHERS

PLAYER	HAND	ERA
MCDONALD	R	2.43
JOHNSON	R	4.10
HARRISON	R	4.34
MILACKI	R	4.46
CLSON	R	2.42
WILLIMSN	R	2.21
SCHILUNG	R	2.54
PRICE	L	3.58
MITHPELL	R	4.64
BALLARD	L	4.93

(CA) CALIFORNIA

BATTERS

PLAYER	HAND	AVG	HR	SPD	POS
POLONIA	L	335	2	14	O
RAY	S	277	5	5	I
WINFIELD	R	267	21	5	O
PARRISH	R	268	24	5	C
JOYNER	L	268	8	6	I
HOWELL	L	228	8	6	I
SCHOFIELD	R	255	1	6	I
WHITE	S	217	1	13	O
DOWNING	R	273	14	5	O
DAVIS	S	265	12	6	O
HILL	S	264	3	6	C
VENABLE	L	259	4	8	O
BICHETTE	R	266	15	7	O
STEVENS	L	214	7	6	I

PITCHERS

PLAYER	HAND	ERA
FINLEY	L	2.40
MCCASKILL	R	3.25
LANGSTON	L	4.40
ABROTT	L	4.51
HARVEY	R	3.22
FRASER	R	3.08
EICHHORN	R	3.08
FETTERS	R	4.12
GRAHE	R	4.98
BLYEVEN	R	5.24

(CH) CHICAGO (NTL)**BATTERS**

PLAYER	HAND	AVG	HR	SPD	POS
GRACE	L	309	9	10	I
DUNSTON	R	262	17	14	I
DAWSON	R	310	27	12	O
SANDBERG	R	306	40	13	I
D SMITH	L	262	6	9	O
SALAZAR	R	254	12	7	I
WALTON	R	263	2	10	O
GIRARDI	R	270	1	9	C
DASCENZI	S	253	1	12	I
CLARK	L	275	5	10	O
WILLIAMS	R	272	7	5	C
RAMOS	R	265	2	6	I
WILKERSM	S	220	0	5	I
WYBIE	L	304	4	8	O

PITCHERS

PLAYER	HAND	ERA
MADONIX	R	3.45
HARVEY	H	3.26
PIELICKI	R	4.93
MUNEZ	R	6.53
WILLIAMS	L	3.93
ASSMACHH	L	2.80
LONG	R	4.37
LANCASTE	R	4.62
WILSON	L	4.70
PICO	R	4.29

(AT) ATLANTA**BATTERS**

PLAYER	HAND	AVG	HR	SPD	POS
L SMITH	R	305	9	11	O
GANT	R	303	32	15	O
TREADWAY	L	283	11	7	I
JUSTICE	L	282	26	9	I
PREBLEY	R	242	19	5	I
BLAUSER	R	260	8	7	I
OLSON	R	262	7	6	C
MCDOWELL	L	243	7	9	O
CABRERA	R	277	7	6	I
GREGG	L	264	5	8	O
LEMK	S	226	0	5	I
THOMAS	R	259	5	5	I
WHITT	L	172	2	5	C
KREHERS	L	111	1	6	I

PITCHERS

PLAYER	HAND	ERA
LEIBRNDT	L	3.15
SMOLTZ	R	3.64
GLAVINE	L	4.28
AVERY	L	5.64
MERCER	L	3.17
CASTELLO	L	4.23
PERRETT	R	4.04
GRANT	R	4.73
PSMITH	R	5.49
CLARY	R	5.67

(BO) BOSTON**BATTERS**

PLAYER	HAND	AVG	HR	SPD	POS
BOGGS	L	302	6	7	I
GREENWILL	L	287	14	9	O
BRUNSKY	R	267	15	9	O
BURKS	R	296	21	11	O
JO REED	R	289	5	6	I
QUINTANA	R	287	7	5	I
PENA	R	253	7	8	C
RIVERA	R	325	7	6	I
MARSHALL	R	286	4	6	O
ROMINE	R	272	2	8	O
MAHRING	R	277	2	5	I
EVANS	H	249	13	7	O
MANZANO	R	211	0	5	C
BARRETT	R	226	0	6	I

PITCHERS

PLAYER	HAND	ERA
CLEMENS	R	1.03
BODDICKR	R	3.39
KIECKER	R	3.97
HARRIS	R	4.00
BEARDON	R	3.16
BOLTON	R	3.38
BRAY	R	4.44
LAMP	R	4.68
JE REED	R	4.82
GARDNER	R	4.69

(CH) CHICAGO (AMER)**BATTERS**

PLAYER	HAND	AVG	HR	SPD	POS
JOHNSON	L	.285	1	17	O
SOSA	R	.233	15	16	O
CALDERON	R	.273	14	14	O
FSK	R	.285	18	8	E
GUILLEN	L	.279	1	10	I
VENTURA	L	.249	5	5	I
FLETCHER	R	.242	4	6	I
MARTINEZ	R	.224	4	7	I
PASQUA	L	.234	13	14	O
THOMAS	R	.300	7	7	I
BRADLEY	R	.295	4	11	O
KARKOVIC	R	.246	6	6	O
LYONS	L	.192	1	6	I
GAEBECK	R	.168	0	5	I

PITCHERS

PLAYER	HAND	ERA
HIBBARD	L	3.16
KING	R	3.28
MCDOWELL	R	3.82
PEREZ	R	4.61
THOMPEN	R	1.83
JONES	R	2.31
EDWARDS	L	3.22
PALL	R	3.32
PATTERSON	L	3.34
FERNANDEZ	R	3.89

(MT) MONTREAL**BATTERS**

PLAYER	HAND	AVG	HR	SPD	POS
RAINES	S	.287	9	16	O
DESJARDIS	L	.289	4	17	I
WALLACH	R	.296	21	9	I
GALARRAGA	R	.256	20	9	I
WALKER	L	.241	19	12	O
DIA MONTAZ	L	.279	11	11	O
FITZGERALD	R	.243	9	9	O
OWEN	S	.234	5	9	I
GRISSOM	R	.257	3	13	O
NOBIDA	R	.266	0	7	I
NIXON	S	.251	1	18	O
ALDRETE	L	.242	1	6	O
FOLEY	L	.213	0	5	I
SANTOVEN	R	.190	6	5	O

PITCHERS

PLAYER	HAND	ERA
BOYD	R	2.93
DE MOTT	R	2.95
GARDNER	R	3.42
GROSS	R	4.57
MURKE	R	2.52
FREY	L	2.10
HUSKIN	L	2.75
SAMPEN	R	2.99
SCHMIDT	R	4.31
HALL	L	5.09

(CI) CINCINNATI**BATTERS**

PLAYER	HAND	AVG	HR	SPD	POS
MORRIS	L	.340	7	9	I
LARKIN	R	.301	7	15	I
SABO	R	.270	25	17	I
DAVIS	R	.260	24	12	O
DUNCAN	R	.306	10	12	I
ONEILL	L	.270	15	9	O
HATCHER	R	.276	5	15	O
OLIVER	R	.231	6	5	O
DORAN	S	.300	7	12	I
CESTER	S	.299	0	5	I
BHAGGS	R	.299	6	7	O
WINNINGHAM	L	.256	3	11	O
BENZINGER	S	.253	5	7	I
REED	L	.251	3	5	O

PITCHERS

PLAYER	HAND	ERA
BLUD	R	2.70
ARMSTRONG	R	3.42
JACKSON	L	3.61
BROWNING	L	3.80
DIBBLE	R	1.74
MYERS	L	2.05
CHARLTON	L	2.74
LAYMAN	R	3.49
BIRTCHAS	L	3.86
MAHLER	R	4.26

(CL) CLEVELAND**BATTERS**

PLAYER	HAND	AVG	HR	SPD	POS
BROWNE	S	.267	6	10	1
JACOBY	R	.293	14	7	1
ALDMAR	R	.290	9	7	6
MALDONADO	R	.273	22	7	0
BERGIA	S	.260	7	6	0
SNYDER	R	.233	14	6	0
FERRINI	R	.236	1	7	1
WEBSTER	S	.252	12	12	0
C. JAMES	R	.269	12	7	0
GOLE	L	.300	0	16	0
D. JAMES	L	.274	1	7	1
BROOKHUIS	R	.266	1	6	1
SKINNER	R	.252	2	4	0
JEFFERS	S	.237	2	7	0

PITCHERS

PLAYER	HAND	ERA
CANDIOTT	R	1.65
FARRELL	R	4.28
SWINDLE	L	4.40
SVALDIEZ	R	4.75
JONES	R	5.56
OLIN	R	3.41
DROSCCO	L	3.90
C. WARD	R	4.25
WALKER	R	4.82
SHAW	R	6.06

(KC) KANSAS CITY**BATTERS**

PLAYER	HAND	AVG	HR	SPD	POS
BRETT	L	.329	14	11	1
WILSON	S	.290	7	13	0
EISENRICH	L	.280	5	11	0
JACKSON	R	.272	28	10	0
SMITZER	R	.273	6	8	1
MACFARLEN	R	.252	6	7	0
WHITE	R	.276	2	5	1
SHLEWELL	S	.249	3	9	1
MICHAEL	S	.285	2	8	0
TARTARILL	R	.268	15	6	0
TABLER	R	.277	1	5	0
PERRY	L	.294	8	11	0
PELICITA	R	.242	5	9	1
BOONE	R	.231	11	6	0

PITCHERS

PLAYER	HAND	ERA
APPIER	R	2.76
LABERNGH	R	3.22
GORDON	R	3.73
S. DAVIS	R	4.74
FARRE	R	1.98
MONTGOMERY	R	2.39
MCGAFFEY	R	3.09
CRAWFORD	R	4.16
SLIBICZA	R	4.90
M. DAVIS	L	5.11

(NY) NEW YORK (NTL)**BATTERS**

PLAYER	HAND	AVG	HR	SPD	POS
MAGADAN	L	.328	6	8	1
BOSTON	L	.273	12	12	0
JOHNSON	S	.244	23	15	1
STRIMBERG	L	.277	37	10	0
MCDONALDS	R	.269	24	9	0
JEFFERS	S	.283	15	9	1
SASSER	L	.307	6	5	0
ELSTER	R	.267	9	6	1
GARREON	R	.250	10	6	0
HEHR	S	.261	5	8	1
MILLER	R	.258	1	11	0
TEUFFE	R	.246	16	7	1
MARSHALL	R	.239	8	5	1
O'MALLEY	L	.225	3	5	1

PITCHERS

PLAYER	HAND	ERA
VIOLA	L	2.67
COOK	R	3.23
FERNANDEZ	L	3.46
GOODEN	R	1.83
FRANCO	L	2.53
SCHWARTZ	L	2.20
PELUS	R	3.20
WHITHEST	R	3.21
QUEEN	L	3.66
DARLING	R	4.50

(HO) HOUSTON**BATTERS**

PLAYER	HAND	AVG	HR	SPB	POS
CANDALE	S	286	3	10	I
BIGGIO	R	276	4	13	C
STUBBS	L	251	23	12	O
DAVIS	R	251	22	9	I
WILSON	R	245	10	5	O
YELING	R	254	1	19	O
RAMIREZ	R	261	2	9	I
CANNITI	S	242	4	9	I
ANTHONY	L	192	10	8	O
DAVIDSON	R	202	1	5	O
OBERKELL	L	207	1	6	I
GEOMAN	L	202	1	6	C
POHDE	R	194	0	5	I
YOUNG	S	175	1	8	O

PITCHERS

PLAYER	HAND	ERA
PORTERER	R	3.62
DESHAIES	L	3.76
SCOTT	R	3.81
GULLICKSON	R	3.82
SMITH	R	2.39
ANDERSEN	R	1.95
DARWIN	R	2.21
AGOSTO	L	4.29
HERNANDEZ	R	4.62
CLANCY	R	6.51

(DT) DETROIT**BATTERS**

PLAYER	HAND	AVG	HR	SPB	POS
TRAMMELL	R	304	14	9	I
MOSEBY	L	248	14	12	O
PHILLIPS	S	251	8	12	I
FIELDER	R	277	51	5	I
WHITAKER	L	237	18	9	I
HEATH	R	270	7	8	C
LEMON	R	258	5	8	O
WARD	R	255	9	7	O
FRYMAN	R	297	9	7	I
BERGMAN	L	278	2	7	O
SHEETS	L	261	10	6	O
SHELBY	S	248	4	8	O
SALAS	L	282	9	5	C
COLLES	R	209	3	6	I

PITCHERS

PLAYER	HAND	ERA
MORRIS	R	4.51
PETRY	R	4.45
MAJANA	L	5.31
ROBINSON	R	5.06
HENNEMAN	R	3.05
NUNEZ	R	2.24
CLEATON	L	2.94
GIBSON	L	3.05
PARKER	R	3.58
TERRELL	R	4.54

(MN) MINNESOTA**BATTERS**

PLAYER	HAND	AVG	HR	SPB	POS
MACK	R	326	6	10	O
GLADDEN	R	275	5	14	O
PLOCKETT	R	298	12	8	O
HIRBEK	L	283	22	7	I
GACCI	R	229	10	9	I
HARPER	R	294	6	7	C
GAGNE	R	235	7	9	I
LIBANO	S	294	1	11	I
LARKIN	S	269	5	8	O
ORTIZ	R	335	0	6	C
BUSH	L	243	6	6	O
NEWMAN	S	242	0	9	I
MARQUEE	R	237	5	6	I
MOSES	S	221	1	7	O

PITCHERS

PLAYER	HAND	ERA
FRICKSON	R	2.67
GLUTHRIE	L	3.79
TAPANI	R	4.07
ANDERSON	L	4.53
AGUILERA	R	2.76
LEACH	R	3.20
BERENGUER	R	3.41
DRUMMOND	R	4.35
SMITH	R	4.81
WEST	L	5.10

(PH) PHILADELPHIA**BATTERS**

PLAYER	HAND	AVG	HR	SPD	POS
LYNSTRA	L	.325	9	15	O
DAULTON	L	.268	12	8	C
YHAYES	L	.261	17	11	O
MURPHY	R	.245	24	9	O
TEW	R	.255	8	10	I
C. HAYES	R	.258	10	5	I
JORDAN	R	.241	5	6	I
HEADY	R	.244	7	7	I
KRUK	L	.291	7	11	O
LAKE	R	.250	0	5	O
MERRAMIN	L	.24*	1	6	I
BOURKE	R	.221	3	7	I
CAMPUSANO	R	.21*	2	6	O
HULLINS	C	.184	5	5	I

PITCHERS

PLAYER	HAND	ERA
MULHIMP	R	3.34
ECHOLS	R	3.74
STUMBO	L	4.02
HUFFIN	L	5.36
GRIMSLEY	R	3.50
BOEVER	R	3.25
AKENFLES	R	3.27
WILLOWELL	R	3.86
CARMAN	L	4.1*
HOWELL	R	4.64

(LA) LOS ANGELES**BATTERS**

PLAYER	HAND	AVG	HR	SPD	POS
JAVIER	L	.304	3	12	O
SAMBEI	R	.242	13	15	I
SHARRIN	R	.29*	3	10	I
MURRAY	S	.300	26	9	I
DANIELS	L	.295	27	7	O
BROOKS	R	.295	20	6	O
SCIOSSIA	L	.264	12	5	O
GRIFFIN	S	.210	7	8	I
GIBSON	L	.200	8	13	O
HARRIS	L	.304	2	10	I
GWYNN	L	.354	5	4	O
GONZALEZ	R	.242	7	8	O
HARTNER	R	.212	0	5	I
DEMPEY	R	.190	2	5	O

PITCHERS

PLAYER	HAND	ERA
MARTINEZ	R	2.42
MORGAN	R	3.75
BELCHER	R	4.00
VALENZUE	L	4.26
HOWELL	R	2.18
CREWS	R	2.77
GOTT	H	2.50
HARTLEY	R	2.95
NEIDENBACH	R	3.29
COOK	L	3.02

(MW) MILWAUKEE**BATTERS**

PLAYER	HAND	AVG	HR	SPD	POS
SHEFIELD	R	.294	10	13	I
MOLITON	R	.285	12	13	I
SUSHOFF	L	.276	6	12	O
OFER	R	.200	27	6	O
YOUNG	R	.247	17	12	O
FELDER	S	.274	3	12	O
BROCK	L	.248	7	6	I
SPIERS	L	.242	2	9	I
PARKER	L	.284	21	7	O
HAMILTON	L	.205	1	11	O
DUZ	R	.277	0	7	I
GANTHER	L	.263	0	12	I
VALICHRN	R	.220	17	5	O
SVELM	S	.197	1	5	I

PITCHERS

PLAYER	HAND	ERA
ROBINSON	R	3.97
HIGLEBA	L	3.76
BOSIO	R	4.00
KNOXSON	R	4.12
CRIM	R	3.47
MIRARELL	R	3.97
KRUGGER	L	3.98
PLESAL	L	4.43
ETIENS	R	4.25
NAVARRI	R	4.45

(OK) OAKLAND**BATTERS**

PLAYER	HAND	AVG	HR	SPD	PDS
R HENDRSON	R	325	28	19	0
LANSFORD	R	268	3	11	1
CANSECO	R	274	37	12	0
MCCWIRE	R	235	39	5	1
D HENDRSON	R	271	25	6	0
STEINBECH	R	251	9	5	0
WEISS	S	265	2	9	1
HANDLOPH	R	257	1	9	1
BAINES	L	284	16	5	0
JOSE	S	264	8	0	0
HASSEY	L	213	5	4	0
GALLEGO	R	206	3	7	1
JENNINGS	L	192	2	8	0
BURNISHIP	R	191	0	8	1

PITCHERS

PLAYER	HAND	ERA
STEWART	R	2.56
WELCH	R	2.95
SANDERSON	R	3.66
MOORE	R	4.65
EGRERSLEY	RS	0.61
NELSON	R	1.57
KLINK	L	2.04
HONEYCUTT	L	2.70
BURNS	R	2.97
YOUNG	L	4.85

(PI) PITTSBURGH**BATTERS**

PLAYER	HAND	AVG	HR	SPD	PDS
BREAM	L	270	15	9	1
WANSLEYKE	L	284	17	12	0
BONILLA	S	280	32	9	0
BONDS	L	301	33	18	0
SLAUGHT	R	300	4	5	0
BELL	R	254	7	10	1
LIND	R	261	1	9	1
KING	R	245	14	5	1
BACKMAN	S	292	2	9	1
REYNOLDS	S	288	0	0	0
LAVALLER	L	258	3	6	0
RETIUS	R	247	6	10	1
MARTINEZ	R	240	10	5	1
MCCLENNON	R	164	2	6	0

PITCHERS

PLAYER	HAND	ERA
DRABEK	R	2.76
SMITH	L	2.55
HEATON	L	3.45
SMILEY	L	4.64
LANDRUM	R	2.13
TOMLIN	L	2.55
PATTERSON	L	2.95
KIPPER	L	7.02
BELINDA	R	3.55
WALK	R	5.75

(SD) SAN DIEGO**BATTERS**

PLAYER	HAND	AVG	HR	SPD	PDS
ROBERTS	S	309	9	17	0
GWYNN	L	309	4	13	0
ALONAH	S	287	6	13	1
JACK CLARK	R	266	25	7	1
CASPER	R	232	24	12	0
SANTIAGO	R	270	11	9	0
PAGLIARIL	L	264	7	6	1
TEMPLETON	S	248	9	6	1
JACK ARK	R	366	9	7	1
JACKSON	R	257	3	7	0
ABNER	R	245	3	5	0
LYNN	L	240	6	6	0
FARENT	R	222	3	5	0
STEPHENSON	L	200	4	6	1

PITCHERS

PLAYER	HAND	ERA
WHITSON	R	2.60
HURST	L	3.14
BINES	R	3.60
RASMUSSEN	L	4.51
LEFFERTS	LS	2.57
HARRIS	R	2.30
RODRIGUEZ	L	2.83
SCHIRALD	R	4.41
LILLIUSI	L	5.31
SHOW	R	5.76

(NY) NEW YORK (AMER)**BATTERS**

PLAYER	HAND	AVG	HR	SPD	POS
SAX	R	268	1	12	1
KELLY	R	285	15	17	0
BARFIELD	R	240	25	7	0
MAS	L	252	21	6	1
LEYBIZ	R	257	5	6	1
AZOGAR	L	248	5	8	0
ESPINOZA	R	224	2	6	1
GENEV	R	313	8	5	0
BALBONI	R	192	17	4	1
GEROME	R	302	2	5	0
HALL	L	258	12	6	0
MATTINGLY	L	255	5	5	1
NOLES	L	246	11	6	0
VELARDE	R	210	5	6	1

PITCHERS

PLAYER	HAND	ERA
LAPOLD	L	4.11
LEARY	R	4.11
GARY	L	4.16
HAWKINS	R	5.37
BUCHETTI	L	4.57
BLUNK	R	2.72
GUTTERMAN	L	3.39
ROBINSON	R	3.45
WITT	R	4.00
CAHARET	L	4.15

(SE) SEATTLE**BATTERS**

PLAYER	HAND	AVG	HR	SPD	POS
REYNOLDS	S	252	5	15	1
BILLY	L	246	5	11	0
F. MARTINZ	R	302	11	5	1
GRIFFYJR	L	300	22	12	0
COTTO	R	259	4	12	0
VIZQUEL	S	247	2	7	1
O'BRIEN	L	224	5	5	1
VALLE	R	254	7	5	0
DAVIS	L	283	17	6	0
BURRER	R	275	7	6	1
JONES	R	260	6	6	0
LEONARD	R	251	10	6	0
BHUMBLEY	S	324	0	5	1
BHADLEY	L	223	1	5	1

PITCHERS

PLAYER	HAND	ERA
HANSON	R	3.24
FD. MCG	L	3.51
JOHNSON	L	3.55
HOLMAN	R	4.01
SCHUCHER	R	2.25
SWIFT	R	2.30
EDMISTOCK	L	2.80
SWAN	L	3.64
JACKSON	R	1.91
HARRIS	R	4.74

(SL) ST. LOUIS**BATTERS**

PLAYER	HAND	AVG	HR	SPD	POS
COLEMAN	S	292	6	20	0
MCKEL	S	335	3	14	0
GUERRERO	R	281	13	5	1
ZELE	R	244	15	7	1
PENILETH	S	230	6	8	1
O. SMITH	S	284	1	14	1
COQUEMBO	S	252	1	7	1
THOMPSON	L	218	6	14	0
HUMER	R	282	7	13	1
LANKFORD	L	285	3	10	0
PAGNUZZI	R	277	2	5	1
WILSON	R	248	0	5	1
WALLING	L	225	1	5	1
JONES	L	219	1	6	1

PITCHERS

PLAYER	HAND	ERA
TUDOR	L	2.40
MAGRANE	L	3.50
B. SMITH	R	4.27
DEJON	R	4.43
L. SMITH	R	2.70
NIEDENF	R	3.45
TI. WICKS	R	3.47
DAYLEY	L	3.56
DIPRO	L	4.50
TERRY	R	3.75

(SF) SAN FRANCISCO**BATTERS**

PLAYER	HAND	AVG	HR	SPD	POS
BUTLER	L	309	3	19	D
THOMPSON	R	245	15	11	I
CLARK	L	295	19	9	I
MITCHELL	R	290	35	7	D
WILLIAMS	R	277	33	8	I
KENNEDY	L	277	2	5	C
KINGERY	L	295	0	9	D
URIBE	S	248	1	9	I
LEACH	R	293	2	5	D
BASS	S	262	7	7	D
CARTER	R	254	9	5	C
LITTON	R	245	1	6	D
PARKER	R	243	2	8	D
RILES	L	200	8	7	I

PITCHERS

PLAYER	HAND	ERA
BURRETT	R	3.79
WILSON	L	4.00
GARRETT	R	4.15
ROBINSON	R	4.57
BRANTLEY	R	1.56
THURMOND	L	3.34
DOWNS	R	3.43
REUSCHEL	R	3.93
LACROSS	R	3.94
BEDROSIN	RS	4.20

(TO) TORONTO**BATTERS**

PLAYER	HAND	AVG	HR	SPD	POS
FERNANDEZ	S	276	4	16	I
GRUBER	R	274	31	7	I
BELL	R	260	21	6	D
MCGRIFF	L	300	35	7	I
FELIX	S	263	15	12	D
SORDERS	R	286	15	6	C
WILSON	S	265	3	13	D
LEE	S	243	6	7	I
OLERUD	L	265	14	6	D
MULLINX	L	289	2	7	I
WHITE	R	273	2	7	D
MYERS	L	236	5	5	C
HILL	R	231	12	9	D
WILLIAMS	R	161	0	9	D

PITCHERS

PLAYER	HAND	ERA
STIEB	R	2.95
BLACK	L	3.57
KEY	L	4.25
STOLIMYR	R	4.34
HENKE	R	2.17
WELLS	L	3.14
WARD	R	3.45
ACKER	R	3.83
WILLS	R	4.73
GERUTTI	L	4.76

(TX) TEXAS**BATTERS**

PLAYER	HAND	AVG	HR	SPD	POS
FRANCO	H	296	11	14	I
PETTIS	S	239	3	17	D
SIERRA	S	280	16	9	D
INCAVIGL	R	233	24	6	D
PALMEIRO	L	319	14	8	I
BUECHLER	R	215	7	6	I
HUSON	L	240	0	9	I
PETRALLI	L	255	0	5	C
DAUGHERTY	S	300	6	5	D
JORSSILL	R	273	2	6	C
REIMER	L	260	2	6	D
STANLEY	R	249	2	6	D
COOLBAGH	R	200	2	6	I
KUNDEL	R	170	3	7	I

PITCHERS

PLAYER	HAND	ERA
WITT	R	3.36
RYAN	R	3.44
BROWN	R	3.60
HOUGH	R	4.07
ARMSTRONG	R	2.15
ROGERS	L	3.13
MELKE	R	3.73
JFRSSILL	R	4.26
JEFFCOAT	L	4.47
MOYER	L	4.66

(NA) NATIONAL**(AM) AMERICAN****BATTERS**

PLAYER	HAND	AVG	HR	SPD	POS
DYKSTRA	S	325	9	15	D
SABO	R	270	25	13	F
CLARK	L	295	19	9	F
SANDBERG	R	306	43	13	F
MITCHELL	R	290	35	7	D
DAWSON	R	310	27	12	D
SANTIAGO	R	270	11	9	C
O SMITH	S	254	1	14	F
STRIMBERRY	L	277	37	10	D
BONDS	L	301	33	18	D
BOWILLA	S	280	32	9	D
ALOMAR	S	287	6	13	F
WILLIAMS	R	277	33	8	F
OLSON	R	262	7	5	C

PITCHERS

PLAYER	HAND	ERA
ARMSTRONG	R	3.42
MARTINEZ	R	2.92
DE MARTINZ	R	2.95
VIOLA	L	2.67
SMITH	R	2.39
BRANTLEY	R	1.56
DIBBLE	R	1.74
MYERS	L	2.08
FRANCO	L	2.53
HEATON	L	3.45

BATTERS

PLAYER	HAND	AVG	HR	SPD	POS
R ANDERSON	R	325	28	19	D
SAX	R	260	4	17	F
GRIFFY JR	L	300	22	12	D
CANSECO	R	274	37	12	D
MCGWIRE	R	235	39	6	F
C RIPKEN	R	250	21	7	F
BOGGS	L	302	6	7	F
ALOMAR	R	290	9	7	C
FIELDER	R	271	51	5	F
FRANCO	R	295	11	14	F
GRUBER	R	274	31	7	F
BELL	R	265	21	6	D
BURKS	R	296	21	11	D
PARRISH	R	268	24	5	C

PITCHERS

PLAYER	HAND	ERA
WELCH	R	2.95
STIEB	R	2.93
SABERHORN	R	3.27
FINLEY	L	2.40
THIGPEN	R	1.83
ECKERSLY	RS	0.61
CLEMENS	R	1.93
JOHNSON	L	3.65
JONES	R	2.31
OLSON	R	2.42

'83-'89 DIVISION CHAMPIONS: PLAYER ROSTERS & STATS

In addition to all 26 1990 pro teams (plus All Stars), RBI Baseball 3 also gives you the Division Champions from 1983 through 1989. Now, you can finally answer those age-old questions of how the best teams from different years would have fared against each other!

ABBREVIATION KEYS

BATTERS

HAND- RIGHT (L) LEFT OR SWITCH HITTER

AVG- BATTING AVERAGE

HR- HOME RUNS

SPD- SPEED (HIGHER THE BETTER)

POS- POSITION (OUTFIELD, INFIELD OR CATCHER)

PITCHERS

HAND- LEFT OR RIGHT SIDARM

ERA- EARNED RUN AVERAGE

(TO) TORONTO '89

BATTERS

PLAYER	HAND	AVG	HR	SPD	POS
FERNANDEZ	S	257	11	12	I
LIRIAND	S	263	5	10	I
GRUBER	R	290	18	9	I
MCGRIFF	L	269	35	7	I
BELL	R	287	18	6	O
FELIX	S	268	9	11	O
WHITE	L	262	11	6	O
MOSEBY	L	221	11	12	O
WILSON	S	248	2	9	O
LEE	S	260	3	6	I
MULLINRS	L	238	3	5	I
LAWLESS	R	229	0	10	O
BB CATCH	R	170	1	6	O
BODIFORS	R	257	3	5	O

PITCHERS

PLAYER	HAND	ERA
STEIN	R	3.35
KEY	L	3.88
GEROLTI	L	3.07
FLAMMANN	L	3.93
HENKE	R	1.92
WELLS	L	2.40
WILLS	R	3.66
STOTLMYER	R	3.28
WARD	R	3.27
CASTILLO	L	6.11

(OK) OAKLAND '89

BATTERS

PLAYER	HAND	AVG	HR	SPD	POS
RHINDRSM	R	274	12	20	O
LANSFORD	R	306	2	15	I
CANSECO	R	268	17	7	O
MCGWIRE	R	231	33	5	I
PARKER	L	264	22	3	O
STEINBICH	R	273	7	4	O
PHILLIPS	S	262	4	6	I
GALLEGO	R	262	3	7	I
DHINDRSM	H	250	15	7	O
PHHELPS	L	242	7	5	I
JAVIER	S	246	1	9	O
WESS	S	233	3	8	I
BUNKINSHP	R	232	1	9	I
HASSEY	L	226	5	6	O

PITCHERS

PLAYER	HAND	ERA
STEWART	R	3.42
MOORE	R	2.67
DAVIS	R	4.36
WELCH	R	3.08
BURNS	H	2.24
ECKERSLY	RS	1.56
YOUNG	L	3.73
MELSON	R	3.26
HONEYCUT	L	2.35
CORSI	R	1.88

(CH) CHICAGO '89 (NTL)**BATTERS**

PLAYER	HAND	AVG	HR	SPD	POS
WALTON	R	.293	5	17	C
DANSTON	R	.278	9	11	I
DANSON	R	.252	21	7	O
SAMBERG	R	.250	30	10	I
GRACE	L	.314	17	9	I
D SMITH	L	.324	9	6	O
BERRYHILL	R	.257	5	4	C
LAW	R	.235	7	6	I
MCCLENDON	R	.266	12	8	C
WYVIE	L	.243	7	7	O
SALAZAR	S	.282	14	5	I
RAMOS	R	.263	1	5	I
WEBSTER	S	.257	3	10	O
WIKERSH	S	.214	1	7	C

PITCHERS

PLAYER	HAND	ERA
MADDON	R	2.05
MELTCH	R	3.14
GUTHRIE	R	3.05
SAMBERS	R	3.54
WILLIAMS	L	2.75
WILSON	L	4.20
KUGUS	L	4.80
LANCASTER	R	1.36
PICOT	R	3.17
SCHMIDT	L	3.99

(SF) SAN FRANCISCO '89**BATTERS**

PLAYER	HAND	AVG	HR	SPD	POS
RUTLEDGE	L	.283	4	14	O
THOMPSON	R	.241	13	9	I
CLARK	L	.303	25	8	I
MITCHELL	R	.291	17	6	O
WILLIAMS	R	.202	18	6	I
HILLS	L	.278	7	0	I
KENNEDY	L	.339	5	5	C
MALDONADO	R	.217	9	6	O
CHERRIFF	L	.299	2	1	I
NIXON	R	.266	1	0	O
LITTON	R	.252	4	8	I
LEHSE	S	.271	1	7	I
SWAPPING	R	.210	0	6	C
SHERIDAN	L	.205	1	7	C

PITCHERS

PLAYER	HAND	ERA
REYNOLDS	R	2.14
GABELLIS	R	3.25
ROBINSON	R	3.41
KEMPER	L	5.17
LACROSS	R	3.17
BRANTLEY	R	3.02
HAMMARKE	L	3.75
BORDIAN	R	2.87
DO-PITCH	L	3.40
LEFFERTS	L	2.69

(BO) BOSTON '88**BATTERS**

PLAYER	HAND	AVG	HR	SPD	POS
BIRKS	R	.292	14	14	O
BODGS	L	.305	5	8	I
EYAMS	R	.293	21	9	O
GREENWILL	L	.305	22	12	O
REED	R	.293	3	5	I
BARRETT	R	.280	1	8	I
BENZINGH	S	.254	13	6	I
NEWMAN	L	.237	9	3	C
JR LEFT	R	.264	15	6	O
OWEN	S	.249	5	4	I
CLEMON	R	.244	3	4	O
ROMPHE	R	.192	1	6	I
PARRISH	R	.258	7	3	I
ANDERSON	L	.230	0	7	C

PITCHERS

PLAYER	HAND	ERA
CLEMMENS	R	2.90
HURST	L	3.66
GARDNER	R	3.50
BOYD	R	2.54
SMITH	R	2.60
STANLEY	R	3.19
BOLLOCK	R	1.63
LAMP	R	3.48
SMITHSON	R	5.07
BOLTON	L	4.75

(LA) LOS ANGELES '88**BATTERS**

PLAYER	HAND	AVG	HR	SPD	POS
SAX	R	.277	5	17	1
SHELBY	S	.263	10	12	0
MARSHALL	R	.277	20	7	0
GIBSON	L	.290	25	14	0
STUBBS	L	.233	6	9	1
HAMILTON	R	.236	6	5	1
GRIFFIN	S	.194	1	9	1
SCORISON	L	.257	3	3	0
DEMPSY	H	.251	7	4	0
ANDERSON	R	.249	2	7	1
DAVIS	L	.196	2	8	0
KEEP	L	.242	0	5	0
HATCHER	R	.293	1	3	0
TW-THIRD	R	.249	3	5	1

PITCHERS

PLAYER	HAND	ERA
HENSHISP	R	2.26
LEARY	R	2.91
BELONGER	R	2.91
VAENZUL	L	4.24
HOWELL	R	2.08
PENA	R	1.91
ORINSCO	L	2.72
HOLTON	R	1.70
JEPITCH	L	2.41
CREWS	R	3.14

(NY) NEW YORK '88 (NTL)**BATTERS**

PLAYER	HAND	AVG	HR	SPD	POS
DYKSTRA	L	.270	8	14	0
JOHNSON	S	.230	24	12	1
MCPYNLIS	R	.288	27	12	0
STRAWBERRY	L	.269	30	14	0
HERNANDEZ	L	.276	11	5	1
BACKMAN	S	.303	0	8	1
CARTER	R	.242	11	6	0
EUSTER	R	.214	9	6	1
WILSON	S	.296	8	12	0
MAGALIAN	L	.277	1	3	1
TEUFEL	R	.234	4	3	1
LM LEFT	R	.147	0	6	0
SASSER	S	.265	1	4	0
LYONS	L	.231	0	4	0

PITCHERS

PLAYER	HAND	ERA
CONE	R	2.22
GOODEN	R	3.19
DARLING	R	3.25
FERNANDEZ	L	3.03
MYERS	L	1.72
MCDONWELL	R	2.63
LEACH	R	2.54
QUEDA	L	2.88
MUNEZ	R	4.50
MCCULLINE	L	4.09

(OK) OAKLAND '88**BATTERS**

PLAYER	HAND	AVG	HR	SPD	POS
POLONIA	L	.292	2	13	0
LANGFOLD	R	.279	7	14	1
CANSECO	R	.307	42	16	0
MCGARRIE	R	.260	32	4	1
HENDERSH	R	.304	24	6	0
STERNICH	R	.263	9	0	0
WEISS	S	.250	3	3	1
HILBRAND	R	.255	3	5	1
PAKAR	L	.257	12	4	0
DE LEFT	R	.220	7	3	0
GALLEGO	R	.209	2	5	1
JAWER	S	.257	2	12	0
HASSEY	L	.253	7	9	0
PHILLIPS	S	.203	1	6	1

PITCHERS

PLAYER	HAND	ERA
STEWART	R	3.23
WELCH	R	3.04
DAVIS	R	3.70
YOUNG	L	4.14
ECKERSELY	RS	2.33
CADARRETT	L	2.89
FLUNK	R	3.00
BURNS	R	3.16
NELSON	R	3.06
HONEYCUTT	L	3.50

(DT) DETROIT '87**BATTERS**

PLAYER	HAND	AVG	HR	SPD	POS
FRAMMELL	R	343	28	12	1
SHERIDAN	L	259	6	12	0
GIBSON	L	277	24	13	0
DE FIRST	L	257	44	7	1
WHITAKER	L	265	16	11	1
NOKES	L	289	32	6	C
LEMON	R	277	20	6	0
BROOKERS	R	241	13	9	1
BM LEFT	R	279	14	6	1
HEATH	R	281	8	1	C
BERGMAN	L	275	6	7	1
LH LEFT	R	324	9	6	0
JG LEFT	L	202	2	8	0
COLLS	R	181	1	5	1

PITCHERS

PLAYER	HAND	ERA
MORRIS	R	3.38
TEMPLE	R	4.06
TAVANA	L	3.91
ROBINSON	R	5.37
KING	R	4.89
HERNANDEZ	L	3.67
HENNEMAN	R	2.96
DA PITCH	R	1.53
PETRY	R	5.61
SNEEL	R	3.96

(MN) MINNESOTA '87**BATTERS**

PLAYER	HAND	AVE	HR	SPD	POS
PUCHEIT	R	307	26	10	0
GLADDEN	R	249	4	13	0
BRUNANSKI	R	234	32	9	0
HIRBEK	L	285	34	7	1
GALTTI	R	357	31	9	1
GAGNE	R	205	10	9	1
LOMBROZZI	R	238	8	8	1
LAUDNER	R	191	16	5	0
RS SECOND	S	275	8	6	1
RUSH	L	253	11	9	0
NEWMAN	S	231	0	12	1
ORLANDSON	R	267	1	12	0
LARVIN	S	266	4	6	1
BUTERA	R	...	1	3	C

PITCHERS

PLAYER	HAND	ERA
VIOLA	L	2.90
BYLIVEN	R	4.11
LS PITCH	R	4.35
SMITHSON	R	5.94
REARDON	R	4.48
BERENGUR	R	3.94
AFERSTON	R	4.54
DE PITCH	R	4.98
JIN PITCH	R	5.25
SCHATZDR	L	6.39

(SL) ST. LOUIS '87**BATTERS**

PLAYER	HAND	AVG	HR	SPD	POS
COLEMAN	S	289	3	20	0
SMITH	S	303	0	17	1
MICHEL	S	285	11	10	0
CLARK	R	266	35	5	1
FENDLETH	S	286	12	12	1
FORD	L	285	3	12	0
HERR	S	263	2	11	1
FENA	R	214	5	9	C
LAMREMAN	R	208	8	7	0
OCQUEMIDI	S	286	1	7	0
MORRIS	L	261	3	12	0
LARK	R	251	2	6	1
TS THIRD	L	272	0	9	1
KOHNSON	L	220	0	12	0

PITCHERS

PLAYER	HAND	ERA
COX	R	3.88
MATHEWS	L	3.73
FORSCH	R	4.32
MAGRANE	L	3.54
MURRELL	R	2.66
SH PITCH	L	3.82
DAYLEY	L	2.66
IT PITCH	L	3.84
DAMLEY	R	4.47
PERRY	L	4.39

(SF) SAN FRANCISCO '87**BATTERS**

PLAYER	HAND	AVG	HR	SPD	POS
THOMPSON	R	262	10	12	1
LEONARD	R	280	19	12	0
MITCHELL	R	305	15	9	1
CLARK	L	306	35	9	1
DAVIS	S	250	24	10	0
MALDONADO	R	292	20	9	0
BB CATCH	R	267	14	9	C
URIBE	S	291	5	11	1
ALDRETE	L	325	9	8	0
CS THIRD	R	249	11	6	1
EM LEFT	L	252	4	10	0
MELVIN	R	199	11	3	C
WILLIAMS	R	188	8	8	1
HS THIRD	L	267	1	5	1

PITCHERS

PLAYER	HAND	ERA
DOWNES	R	3.63
LACOSS	R	3.68
HAMMAKER	L	3.68
KRUKOW	R	4.80
GARBELTS	R	3.22
J ROBINSON	R	2.79
ED PITCH	L	3.20
D ROBINSON	R	2.74
LEFFERTS	L	3.23
REUSCHEL	R	4.32

(BO) BOSTON '86**BATTERS**

PLAYER	HAND	AVG	HR	SPD	POS
BARRETT	R	285	4	11	1
BOGGS	L	357	8	5	1
BB FIRST	L	267	18	8	1
EVANS	R	250	26	7	0
JR LEFT	R	324	20	5	0
ARMAS	R	264	11	6	0
GEDMAN	L	280	15	4	C
DUNNINS	R	257	2	7	1
DB LEFT	R	235	31	6	0
ROMERO	R	212	2	6	1
LYONS	L	250	1	9	0
OWEN	S	185	1	9	1
SULLIVAN	R	193	1	3	C
GREENWILL	L	128	0	3	1

PITCHERS

PLAYER	HAND	ERA
CLEMENS	R	2.48
HURST	L	2.99
BOYD	R	3.78
WIPPER	R	5.36
STANLEY	H	4.37
JS PITCH	L	4.84
SCHIRALD	R	1.41
CRAWFORD	R	3.92
GARDNER	R	4.38
JS PITCH	R	4.94

(CA) CALIFORNIA '86**BATTERS**

PLAYER	HAND	AVG	HR	SPD	POS
PETTIS	S	258	5	10	0
SCHOPFIELD	R	249	13	13	1
JOYNER	L	290	22	8	1
MILLER	R	228	0	7	1
DUNNING	R	267	20	6	0
WHITE	S	235	1	9	0
BOONE	R	222	7	6	0
WILFONG	L	219	3	6	1
RYAL	L	363	2	6	0
POLIDORO	R	263	0	5	0
MCCLEMORE	S	250	0	4	1
WOODRICE	R	364	15	4	1
HOWELL	L	272	4	8	1
JR CATCH	L	274	1	6	C

PITCHERS

PLAYER	HAND	ERA
WITT	R	2.84
MCCASKILL	R	3.35
LUGO	R	3.80
CANDELAAR	L	2.95
FRANSEH	R	4.31
MC PITCH	R	4.00
RANGER	L	5.41
SUGAL	L	3.11
ROBINSON	R	4.84
LASHER	R	2.57

(NY) NEW YORK '86 (NTL)

BATTERS

PLAYER	HAND	AVG	HR	SPD	POIS
DESSAUS	L	.230	6	15	2
WILSON	S	.284	9	14	1
BANKHEAD	S	.273	7	16	1
STANWORTH	L	.262	2	14	0
GARDNER	R	.266	1	1	1
DAZELL	S	.249	2	9	1
BERNARDI	L	.240	14	9	1
MAGALHAES	L	.237	0	1	1
MITCHAM	R	.232	1	1	1
MITTLE	R	.227	1	1	1
BRADY	S	.215	0	9	1
HEFF	L	.202	1	7	0
CHIU	R	.200	0	6	0
BRADLEY	R	.200	4	1	1

PITCHERS

PLAYER	HAND	EPA
LOBLEY	R	2.51
COFFIN	L	2.42
STANLEY	L	2.31
WILSON	R	2.21
WILSON	R	2.10
THORNTON	L	2.00
MORAN	L	1.90
WILSON	R	1.80
TACH	R	1.70

(HO) HOUSTON '86

BATTERS

PLAYER	HAND	AVG	HR	SPD	POIS
DURAN	S	.277	6	17	1
HALLBERG	R	.268	6	16	0
BRASS	R	.241	20	1	1
DAVIS	R	.234	31	1	1
WALLING	L	.217	11	1	1
LOPEZ	R	.215	1	1	0
MURPHY	R	.209	1	4	1
THOM	R	.208	1	8	1
COFFIN	L	.201	1	16	1
DRESSER	L	.200	1	1	1
PIPA	R	.200	1	16	0
HILL	L	.200	1	1	0
BRADY	R	.200	1	1	1
BRADLEY	L	.176	1	4	1

PITCHERS

PLAYER	HAND	EPA
COFFIN	L	2.21
WILSON	R	2.12
BRADLEY	L	2.01
BRADY	R	1.91
SMITH	R	1.81
BRADLEY	R	1.71
LOPEZ	R	1.61
WALLING	R	1.51
BRADLEY	R	1.41
BRADLEY	R	1.31

(TO) TORONTO '85

BATTERS

PLAYER	HAND	AVG	HR	SPD	POIS
GARCIA	R	.284	16	14	1
FERRAREZ	S	.284	1	17	1
MURPHY	L	.258	12	14	0
BELL	R	.255	28	14	0
BARFIELD	R	.258	27	14	0
WILBERT	L	.254	15	9	1
MULLINIX	L	.252	19	5	1
WHITE	L	.247	19	1	0
LOPEZ	R	.213	1	6	1
FELDER	R	.211	4	6	0
LEE	S	.200	0	4	1
LEONARD	L	.200	2	6	0
WILBERT	R	.200	0	4	0
LEACH	L	.200	1	4	1

PITCHERS

PLAYER	HAND	EPA
KEY	L	2.00
LEACH	R	1.95
STEIN	R	1.85
CLARK	R	1.75
HARRIS	R	1.65
CARROLL	R	1.55
ACER	R	1.45
LEACH	L	1.35
LAMB	R	1.25
MURPHY	R	1.15

(KC) KANSAS CITY '85**BATTERS**

PLAYER	HAND	AVG	HR	SPD	POS
WILSON	S	278	4	10	D
SMITH	R	257	5	16	O
BRETT	L	335	30	9	I
BALBONI	R	243	36	6	I
FRISCH	R	249	22	9	I
MOLLEY	R	222	17	7	O
JS CATCH	R	245	10	6	C
DC SHORT	H	204	2	7	I
HUMPHREY	R	259	14	3	O
JOE FIRST	L	267	4	6	I
DUNK	L	281	0	3	O
BANCALAN	S	185	1	5	I
SHERIDAN	I	225	3	9	O
PHIL BROOK	L	285	3	4	C

PITCHERS

PLAYER	HAND	ERA
SABERHIN	R	2.67
LEBRON	L	2.69
JACKSON	I	3.42
BLACK	L	4.33
QUINN	RS	2.37
HUISMANN	R	1.93
FARR	R	3.11
CUBICZA	H	4.06
DINES	L	4.06
FREEDRICKS	R	3.87

(SL) ST. LOUIS '85**BATTERS**

PLAYER	HAND	AVG	HR	SPD	POS
MCGEE	S	353	10	20	O
COLEMAN	S	267	1	20	O
VANSLYKE	L	254	11	16	O
CLARK	H	281	20	0	I
HERR	S	302	3	14	I
SMITH	S	276	6	14	I
PENDLTON	S	240	5	12	I
HARPER	R	250	0	8	C
TULLY	R	280	4	6	O
NETO	H	225	0	5	C
SMITH	R	260	0	5	I
FORD	L	300	0	5	O
DEJESUS	R	222	0	5	I
LAWLESS	R	207	0	6	

PITCHERS

PLAYER	HAND	ERA
JPITCH	L	1.93
LOX	R	2.88
JA PITCH	R	3.40
NA PITCH	R	5.59
BUEVER	R	4.41
DAYLEY	L	2.75
WORRELL	H	2.91
BP PITCH	L	2.91
FORSCH	H	3.90
CAMPBELL	H	3.50

(LA) LOS ANGELES '85**BATTERS**

PLAYER	HAND	AVG	HR	SPD	POS
SAK	H	279	1	14	I
DUNCAN	S	244	5	15	I
MANSBULL	R	293	28	7	O
GUERRERO	R	320	33	9	O
BROCK	L	251	21	6	I
KL CENTER	L	268	12	10	O
SCIOSCIA	L	295	7	7	C
ANDERSON	R	199	4	7	I
MALDONADO	H	225	5	5	O
BREAM	L	192	3	3	C
BAGGELY	R	203	4	7	I
STUBBS	L	222	0	9	I
RW LEFT	R	313	0	9	O
REYNOLDS	R	292	0	7	O

PITCHERS

PLAYER	HAND	ERA
HERSHIG	R	2.03
WELCH	R	2.31
VALTANUL	L	2.45
JR PITCH	L	2.92
MORNFUR	H	2.71
HOWE	L	4.91
HONEYCUTT	L	3.42
HOLTON	R	9.00
HOWELL	R	3.77
PENA	R	8.31

(DT) DETROIT '84**BATTERS**

PLAYER	HAND	AVG	HR	SPD	POS.
TRAMMELL	R	.314	14	12	1
BERGMAN	L	.273	7	8	1
LEMON	R	.287	20	9	0
GIBSON	L	.282	27	15	0
JOHNSON	S	.245	17	9	1
WHITAKER	L	.255	15	7	1
LH LEFT	R	.280	7	9	0
FRANZ	R	.237	35	8	1
DE LEFT	L	.232	10	8	0
BROCKENS	R	.240	5	7	0
BOA FIRST	R	.287	5	7	1
BO LEFT	L	.267	8	7	0
LONG	L	.245	9	5	0
DU LEFT	L	.264	12	5	1

PITCHERS

PLAYER	HAND	ERA
PETRY	R	3.04
MURPHY	R	3.00
RENNER	R	3.45
SCHEPPE	L	1.90
HEINER	L	1.80
LUNZ	R	2.94
BLAIR	R	4.25
GRIMAL	P	3.88
MASCH	R	4.50
WELLS	B	2.31

(KC) KANSAS CITY '84**BATTERS**

PLAYER	HAND	AVG	HR	SPD	POS.
WILSON	S	.301	2	18	1
SHERIDAN	L	.265	8	12	0
MOTLEY	R	.284	18	10	0
BALBONI	R	.344	28	5	1
FIV SECND	R	.271	27	6	1
BRETT	L	.264	22	6	0
SLAUGHT	R	.264	1	6	0
CIC SHIRT	R	.280	1	9	1
JC FIRST	L	.298	9	7	0
FWA SECND	S	.274	1	4	1
HML LEFT	P	.302	2	6	0
DAVIS	R	.147	2	7	0
WEBBER	L	.200	1	5	1
BB SHORT	L	.302	1	4	1

PITCHERS

PLAYER	HAND	ERA
BLANK	L	1.17
LEBRIET	L	3.45
SAGEHORN	R	3.42
GUB-GUB	R	2.03
GUINER	R	2.04
LU MAN	L	4.78
BRIELEN	R	3.28
HUNSMAN	R	3.21
JACKSON	L	4.25
SMITH	L	5.28

(CH) CHICAGO '84 (NTL)**BATTERS**

PLAYER	HAND	AVG	HR	SPD	POS.
LD FIRST	L	.279	23	13	1
SANDBERG	R	.314	19	11	1
HATCHER	R	.111	0	13	1
RC THIRD	R	.240	25	16	1
KM HIGH	R	.279	16	12	0
RC CENTER	H	.278	3	7	0
DM LEFT	R	.291	14	17	0
DAVIS	R	.256	19	13	1
VOTTO	R	.274	9	9	0
WITFORD	R	.282	1	10	1
BOSLEY	L	.296	2	5	0
BO SHORT	L	.209	0	7	1
HALL	L	.285	4	5	0
LAKE	S	.194	4	4	1

PITCHERS

PLAYER	HAND	ERA
OUTCUT	R	2.59
FORBES	R	3.00
STEPHIN	L	3.47
SANDERSON	R	1.14
SMITH	R	3.45
RR PITCH	R	3.26
TS PITCH	R	3.62
DE PITCH	R	4.10
RM PITCH	L	1.35
WELSHOFF	R	5.17

(SD) SAN DIEGO '84

BATTERS

PLAYER	HAND	AVG	HR	SPD	POS
COWLEY	L	.351	5	16	C
AWSON	S	.268	1	20	C
MCWHYFIELD	R	.278	10	8	C
NEFTLES	L	.224	2	2	F
HEART	R	.254	11	6	F
MARTINEZ	R	.250	7	4	D
KHARJELAY	L	.240	14	1	C
TEMPERTON	R	.266	1	7	C
FLAHERTY	L	.275	1	1	C
VALAZAR	R	.241	1	9	C
ROSENBLUM	R	.200	1	11	C
HAWKSWORTH	R	.211	1	1	F
MURPHY	R	.211	1	1	F
BACCHILE	L	.180	1	1	F

PITCHERS

PLAYER	HAND	ERA
THORNTON	L	2.31
WATSON	R	3.21
SHAW	R	3.64
BURKH	R	3.51
GARRETT	R	2.91
FERRELLS	L	2.11
LOPATELLO	L	2.94
HEBER	R	3.25
MAGNANIS	R	3.04
WELTON	R	3.18

(BA) BALTIMORE '83

BATTERS

PLAYER	HAND	AVG	HR	SPD	POS
MYLER	S	.270	2	19	C
JSCENIK	L	.263	0	9	C
HUPREN	R	.315	22	5	F
MURRAY	S	.306	31	2	F
EPSTEIN	L	.287	16	6	D
ROGERS	R	.264	2	2	F
DEMPOSE	R	.251	4	4	F
TO THORN	R	.208	1	4	C
LESLIE'S	S	.178	24	2	C
SHELLE	S	.252	5	1	C
ROTHGAL	R	.250	10	1	D
DWYER	L	.266	8	1	F
LOUIS	L	.232	0	2	F
LESTER	R	.254	1	2	F

PITCHERS

PLAYER	HAND	ERA
ROSENBERG	R	2.57
MURPHY	L	4.18
FLAMMIGAN	L	3.80
DAVIS	R	3.59
MARTIN	R	2.95
LOPATELLO	R	3.62
LEPITCH	R	3.42
WELTON	R	4.01
WELTON	R	5.53
LEPITCH	R	6.10

(CH) CHICAGO '83 (AMER)

BATTERS

PLAYER	HAND	AVG	HR	SPD	POS
PARSONS	L	.200	0	20	D
SKAMNER	R	.273	0	13	F
TELFORD	R	.307	9	8	F
KITTEL	R	.254	15	9	C
ELSP	R	.289	25	9	C
BAINES	L	.281	20	8	C
VISAW	R	.245	1	5	F
MURPHY	R	.207	0	9	C
KUHL	R	.201	22	5	C
GRAND	L	.122	4	6	F
WALKER	L	.270	10	7	D
FLETCHER	R	.251	3	4	F
HARRINGTON	S	.204	5	4	F
TESECOND	S	.267	2	6	F

PITCHERS

PLAYER	HAND	ERA
ROSPITCH	R	1.75
MEDIAN	R	2.86
EPITCH	L	3.25
DAVIS	L	3.58
BARONAS	R	2.42
LAMP	R	3.21
AGRESTI	L	4.10
BUEHRLE	R	3.42
WICE	L	4.05
HICKEY	L	5.25

(PH) PHILADELPHIA '83**BATTERS**

PLAYER	HAND	AVG	HR	SPD	POS
MAYES	L	.265	6	13	D
GM LEFT	R	.258	10	10	D
MAJIZAK	L	.275	4	11	F
LIFESON	R	.245	30	9	F
ROUCHICH	R	.206	15	4	C
DEJESUS	R	.254	4	12	F
SAMUEL	R	.277	2	6	D
JELTZ	R	.175	9	4	F
STONE	L	.250	0	9	D
GROSS	L	.302	0	7	O
BE LEFT	R	.231	1	15	D
SANCHEZ	R	.286	9	9	F
MALITON	L	.333	0	5	F
VIRGI	R	.214	6	3	C

PITCHERS

PLAYER	HAND	ERA
ANDERSON	R	2.74
CARMEN	L	3.45
WILSON	R	3.75
MARRAGE	R	3.67
COLLAND	L	2.26
HERRANDEZ	L	3.29
REED	R	3.48
GROSS	R	3.95
BLOMBERG	L	3.55
LITTLE	R	4.75

(LA) LOS ANGELES '83**BATTERS**

PLAYER	HAND	AVG	HR	SPD	POS
SAX	R	.261	6	19	F
MC GENTH	L	.283	17	14	D
MARSHALL	R	.284	11	6	O
GILBERTO	R	.298	32	13	F
BROCK	L	.271	20	7	F
MALDAVINO	R	.171	1	8	D
MCYNOUDS	S	.330	1	9	F
SODINICIA	L	.313	1	6	O
GM LEFT	R	***	0	10	O
BREATA	L	.122	1	1	O
ROSENICKY	S	.271	1	6	O
ESPEY	S	.271	1	3	F
WANDERSON	R	.168	1	8	F
JFCATCH	R	.240	1	5	F

PITCHERS

PLAYER	HAND	ERA
WELCH	R	3.50
PIENA	R	3.75
MC PITCH	L	3.91
VALENTE	L	3.29
HOWE	L	1.44
MUELENR	R	1.94
STEWART	R	2.96
MERSHISEH	R	3.38
BH PITCH	R	1.22
FERRANDEZ	L	6.08

HANDLING THE SEGA™ GENESIS™ CARTRIDGE

- The Sega Genesis Cartridge is intended exclusively for the Sega Genesis System.
- Do not bend, crush or submerge in liquids.
- Do not leave in direct sunlight or near a radiator or other source of heat.
- Do not leave game paused for a long period of time as the image may "burn" into the TV screen.

TENGEN 90-DAY LIMITED WARRANTY

TENGEN warrants to the original purchaser of this software product that the medium on which this computer program is recorded is free from defects of material and workmanship for a period of ninety (90) days from date of purchase. TENGEN agrees to either repair or replace at its option, free of charge, any TENGEN software product. **Before any returns are accepted you must call our warranty department (408/473-9400) for a return authorization number.** You may then return the product postage paid together with the return authorization number, sales slip or similar proof of purchase.

THIS WARRANTY IS NOT APPLICABLE TO NORMAL WEAR AND TEAR. THIS WARRANTY SHALL NOT BE APPLICABLE IF A DEFECT ARISES OUT OF ABUSE, UNREASONABLE USE, MISTREATMENT OR NEGLIGENCE OF THE SOFTWARE PRODUCT. THIS WARRANTY IS IN LIEU OF ALL OTHER WARRANTIES, WHETHER ORAL OR WRITTEN, EXPRESS OR IMPLIED. ANY IMPLIED WARRANTIES OF MERCHANTABILITY AND FITNESS FOR A PARTICULAR PURPOSE ARE HEREBY EXCLUDED. THIS WARRANTY IS LIMITED TO THE 90 DAY PERIOD DESCRIBED ABOVE AND IN NO EVENT SHALL TENGEN BE LIABLE FOR CONSEQUENTIAL OR INCIDENTAL DAMAGES RESULTING FROM THE BREACH OF ANY EXPRESS OR IMPLIED WARRANTIES RELATING TO THE SOFTWARE PRODUCT.

The provisions of this warranty are valid in the United States only. Some states do not allow limitations on how long an implied warranty lasts or exclusion of consequential or incidental damages, so the above limitations and exclusion may not apply to you. This warranty gives you specific legal rights, and you may also have other rights which vary from state to state.

Address all correspondence to:

TENGEN Inc., Warranty Department, P.O. Box 360782, Milpitas, CA 95035-0782

REPAIRS AFTER EXPIRATION OF WARRANTY: If your game cartridge develops problems after the 90-day warranty period, you may contact Tengen at 1-408-473-9400. If the Tengen customer service technician is unable to solve the problem by phone, they will provide you with a RETURN MATERIAL AUTHORIZATION number (RMA). Write this number on the outside of the package used to return your defective game cartridge to Tengen. Return the defective game cartridge, freight prepaid, to Tengen at the address below. Enclose a check or money order for \$12.00 payable to Tengen. Tengen will, at its option, subject to the conditions above, repair the cartridge or replace it with a new or repaired cartridge. If replacement cartridges are not available, the defective cartridge will be returned and the \$12.00 payment refunded.

TENGEN Inc., 675 Sycamore Drive, Attn: Customer Service, Milpitas, CA 95035-0782

**TO ORDER OTHER GREAT GAMES FROM TENGEN
CALL: 1-800-2-TENGEN (1-800-283-6436)**

RE: TM/Atari Games Licensed by Tengen, Inc. © 1991 Tengen, Inc. All rights reserved.

SEGA and GENESIS are trademarks of Sega Enterprises, Ltd.

In the interest of product management, specifications, and pricing, we reserve the right to change without notice.

AtariGuide



PROBLEMS or QUESTIONS?

We recommend that you read this instruction booklet to learn and master the operation of this game. Should you have any further problems or questions about playing this game or any of Tengen's games, please call a ***Tengen game counselor*** at **(408) 433-3999** Monday through Friday from 8:30AM-6:00PM Pacific Time.

TENGEN

ARCADE HITS THAT HIT HOME

675 Sycamore Drive • Milpitas, CA 95035

"Sega" and "Genesis" are trademarks of Sega Enterprises, Ltd.
RBI™ TM Atari Games licensed to Tengen, Inc. ©1991 Tengen, Inc. All rights reserved. This game is manufactured by Sega Enterprises, Ltd. for play on the SEGA® GENESIS® SYSTEM. Printed in Japan.

AtariGAMES